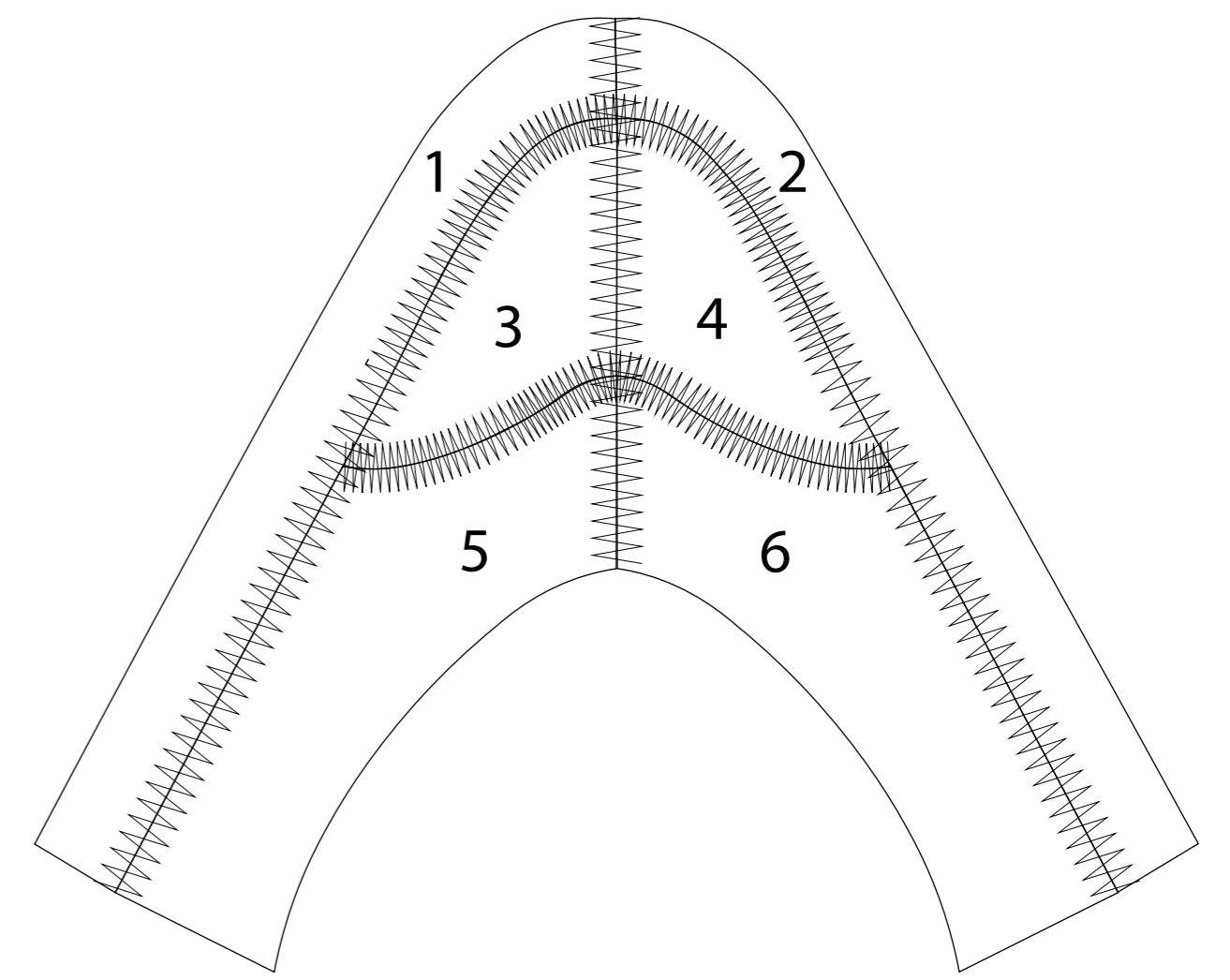


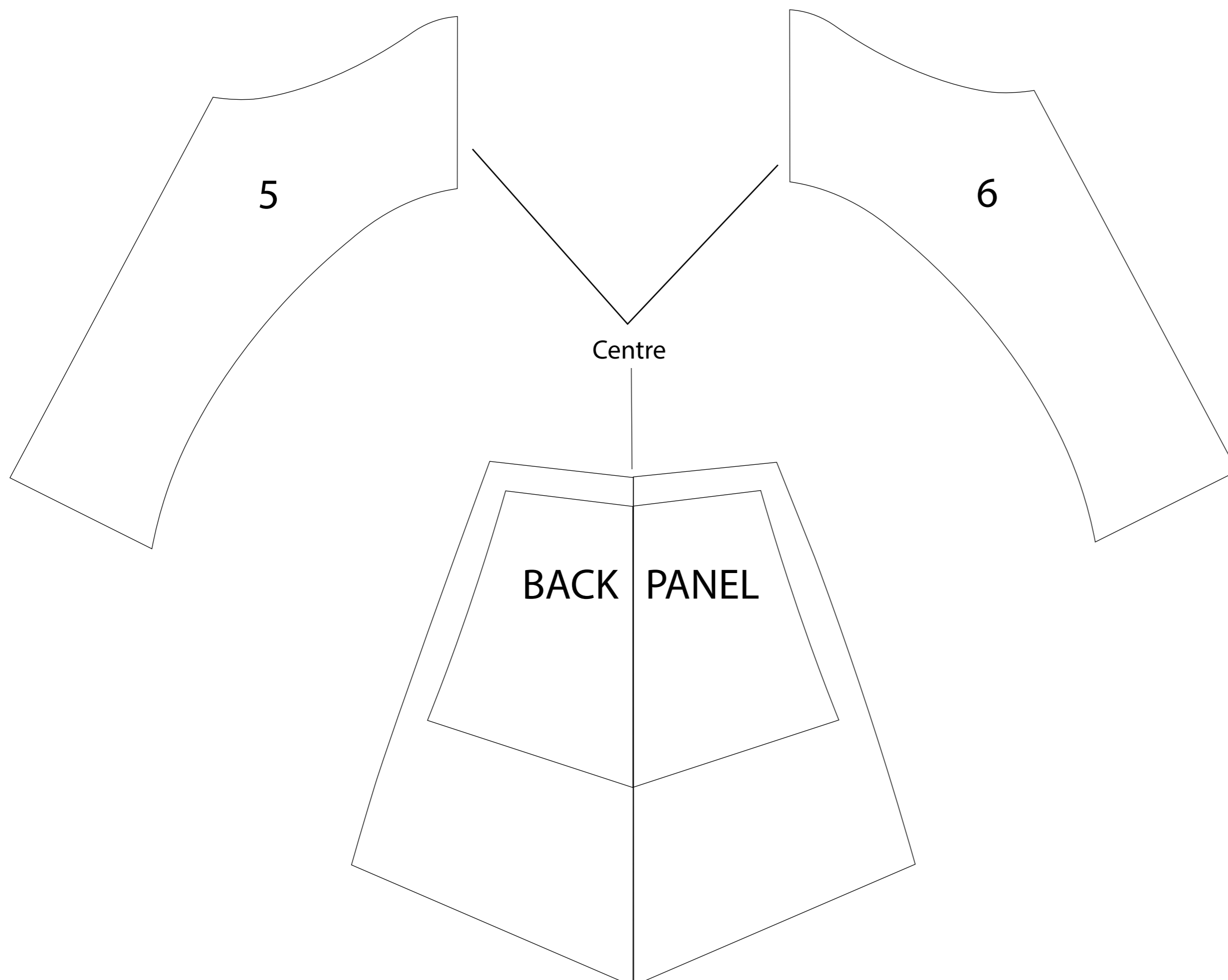
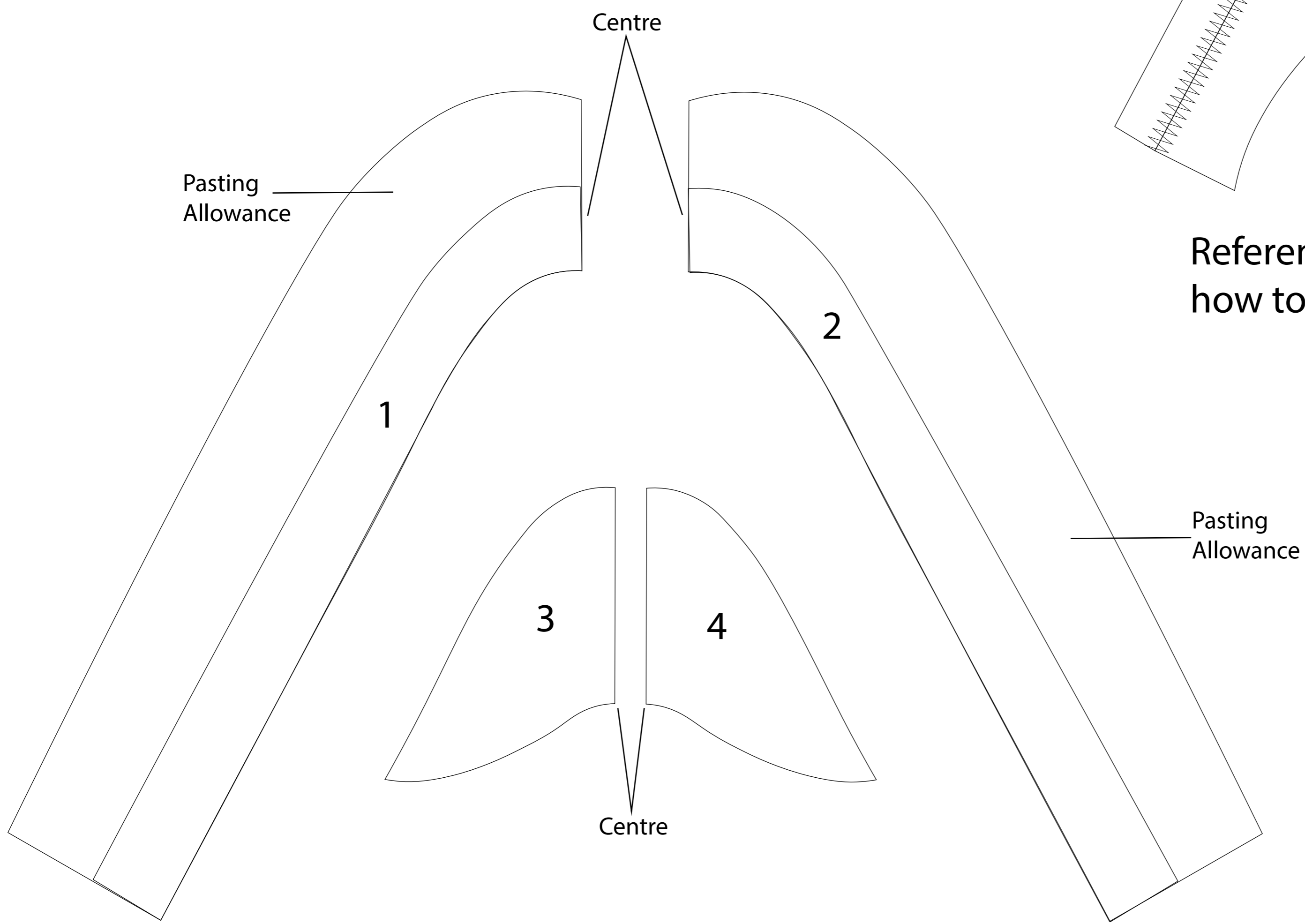
# PATTERN - Calf high Sock boot (Upper)

SIZE- 37/38

Note : All the parts will be cut edge

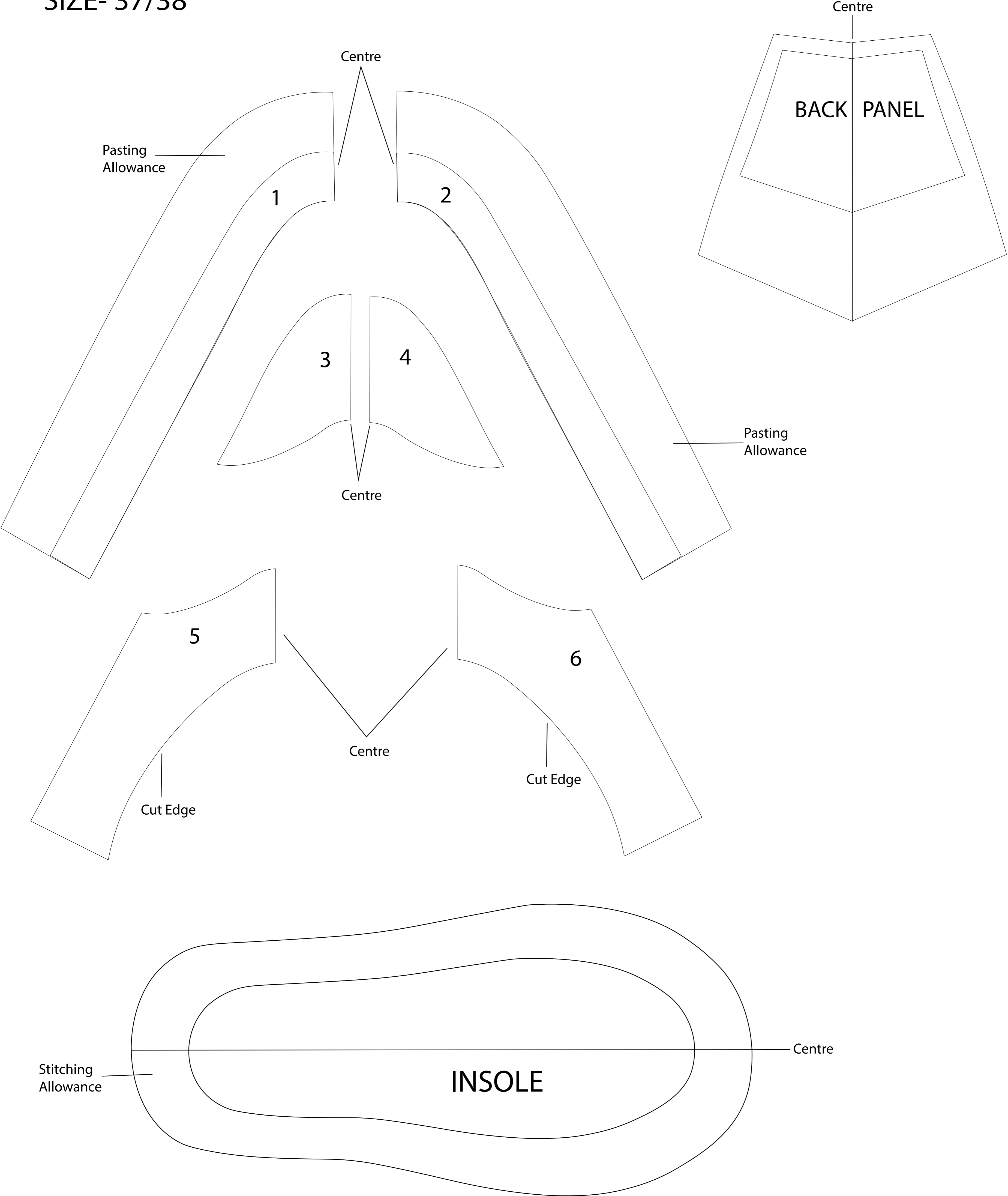


Reference image  
how to attach the Vamp Panels



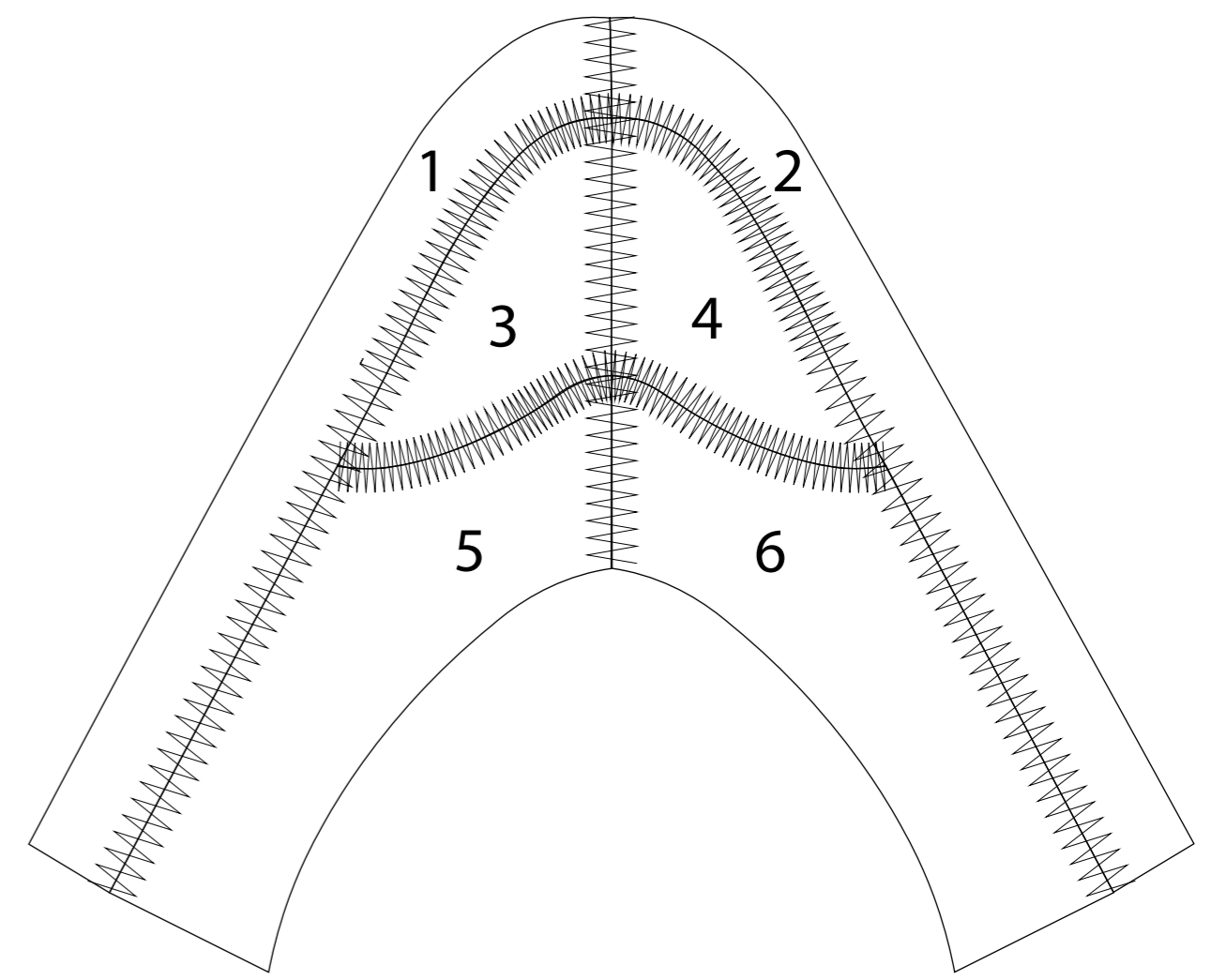
# PATTERN - Calf high Sock boot (Lining)

SIZE- 37/38

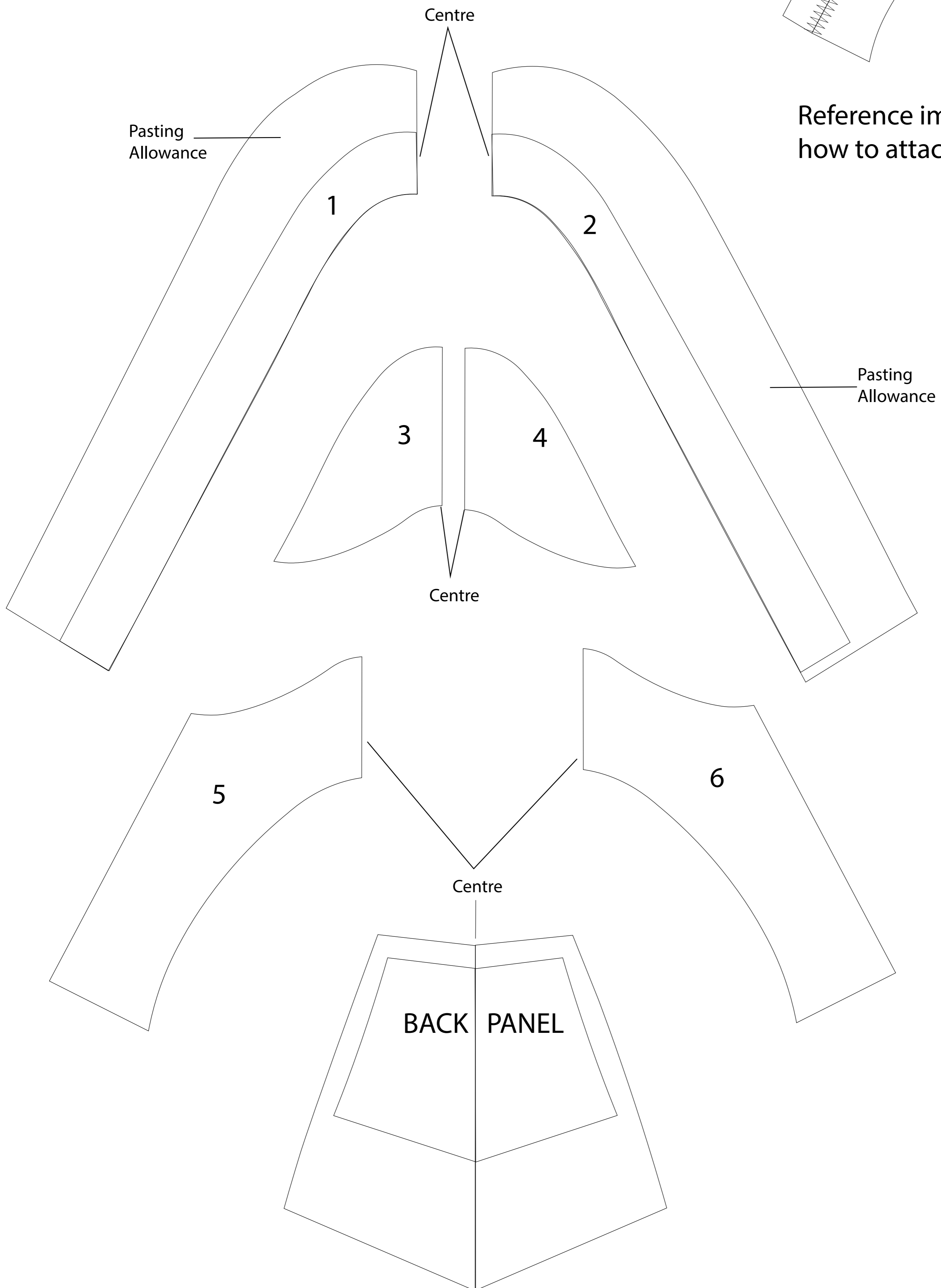


# PATTERN - Calf high Sock boot (Upper)

SIZE- 39/40

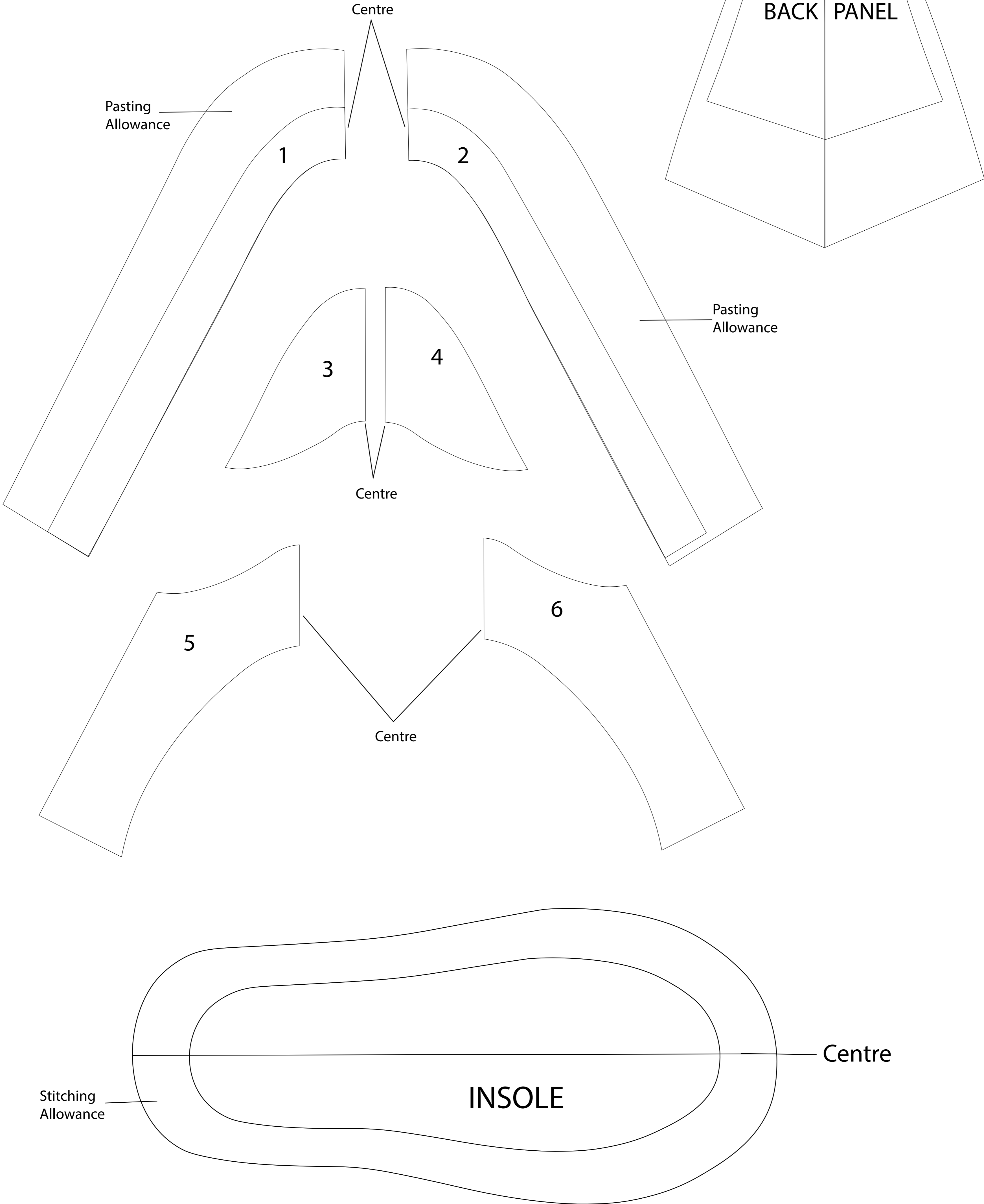


Reference image  
how to attach the Vamp Panels



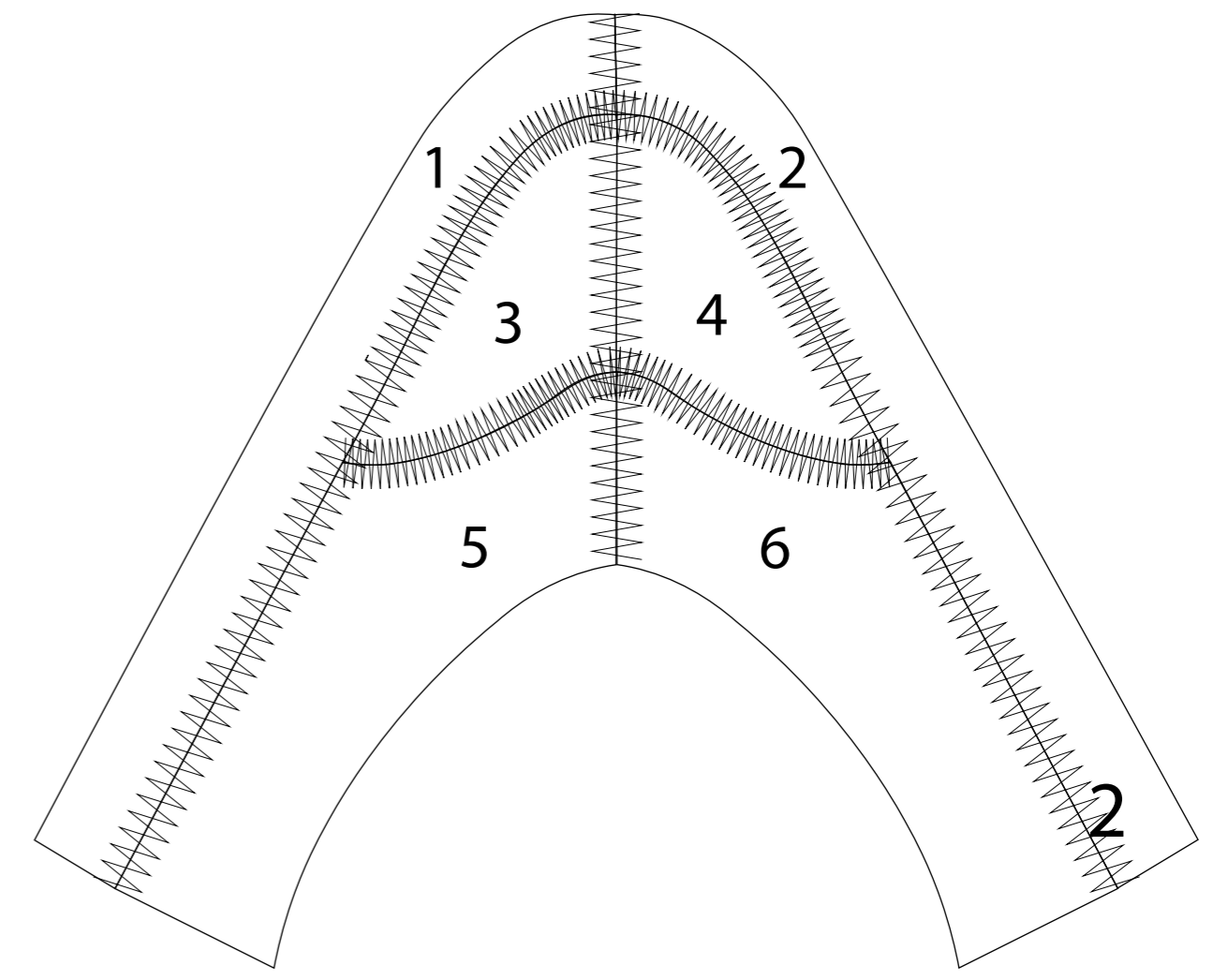
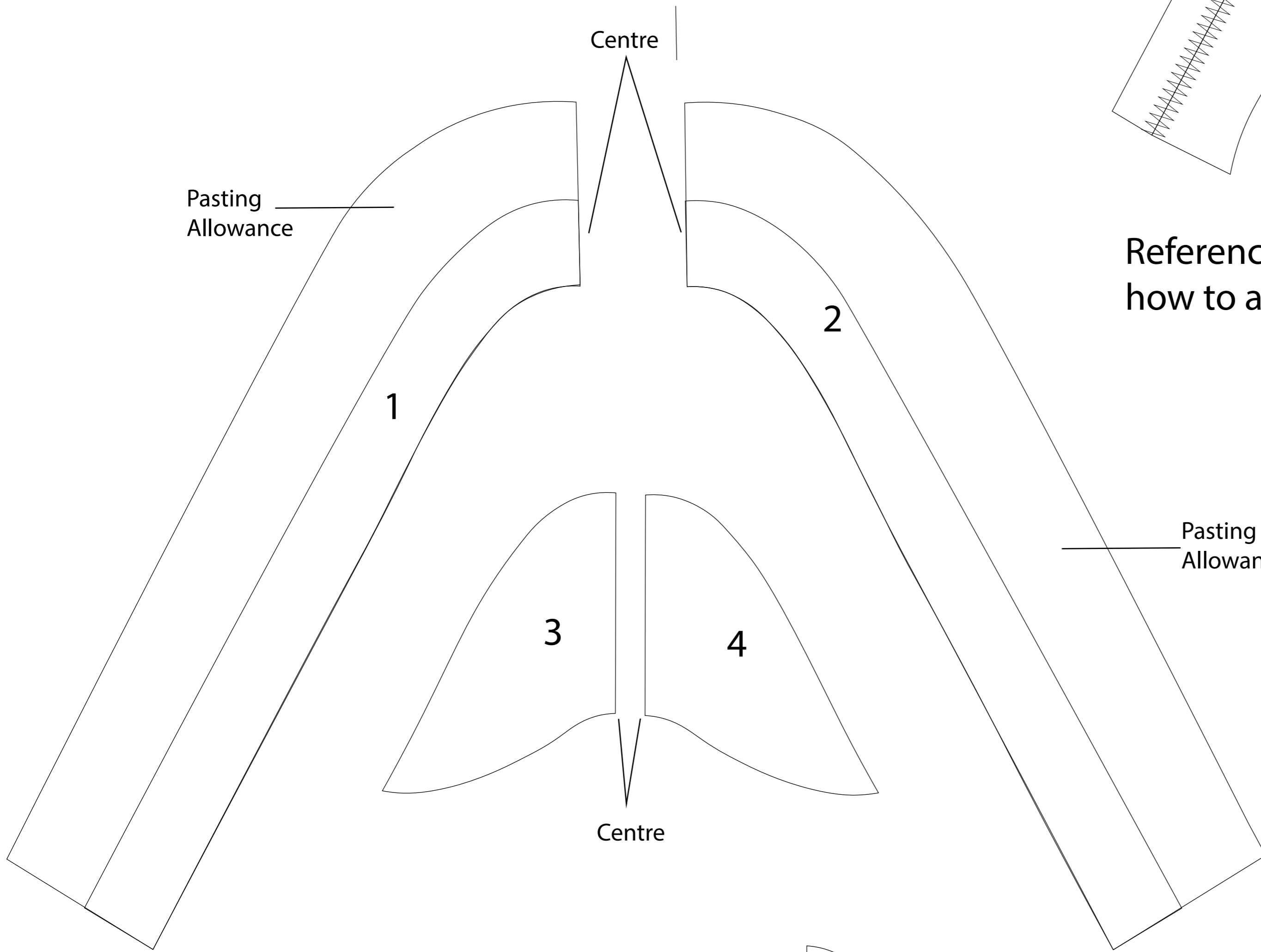
**PATTERN - Calf high Sock boot (Lining)**

**SIZE- 39/40**

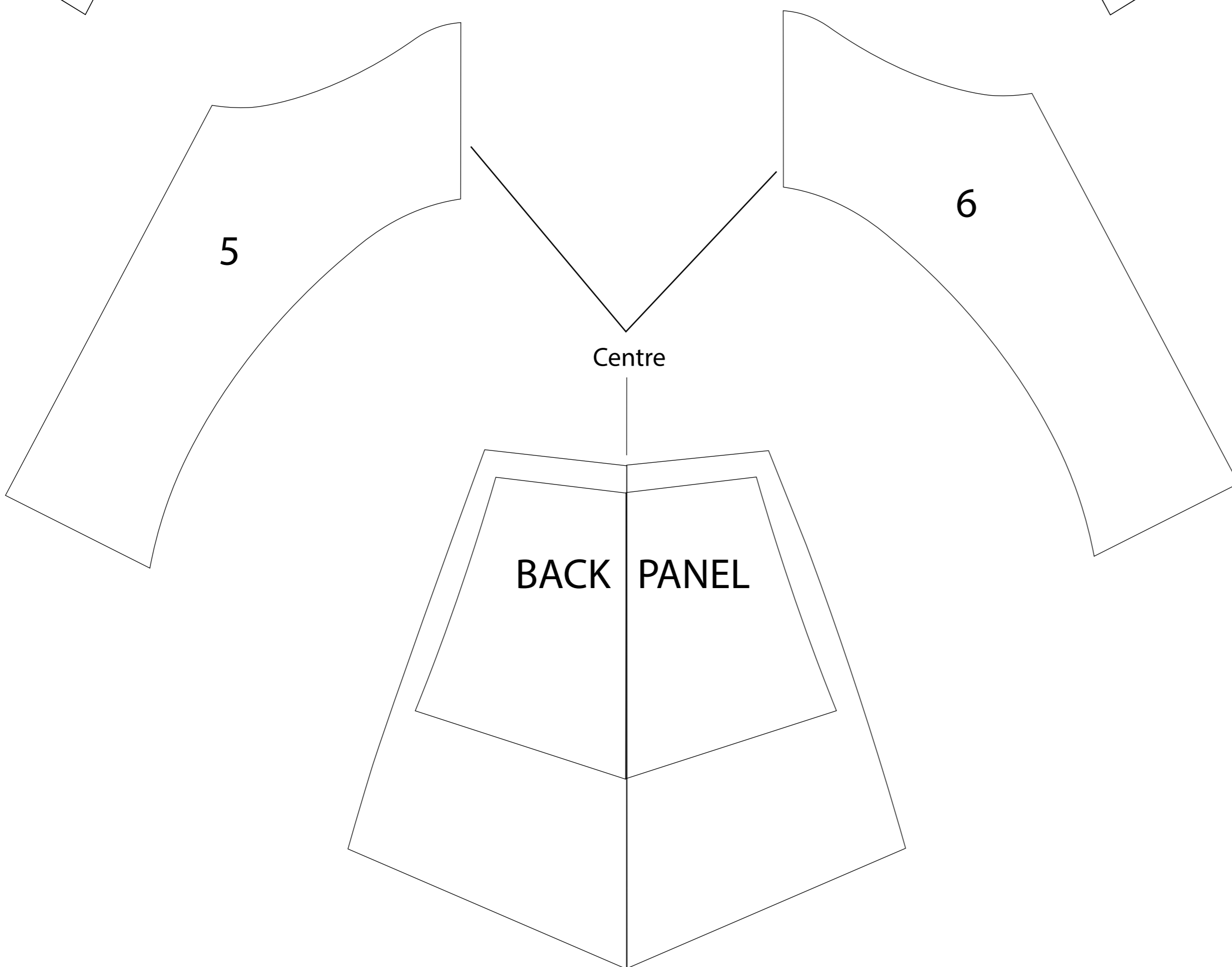


# PATTERN - Calf high Sock boot(Upper)

SIZE- 41/42



Reference image  
how to attach the Vamp Panels



# PATTERN - Calf high Sock boot (Lining)

SIZE- 41/42

